

4
5 THRU 8

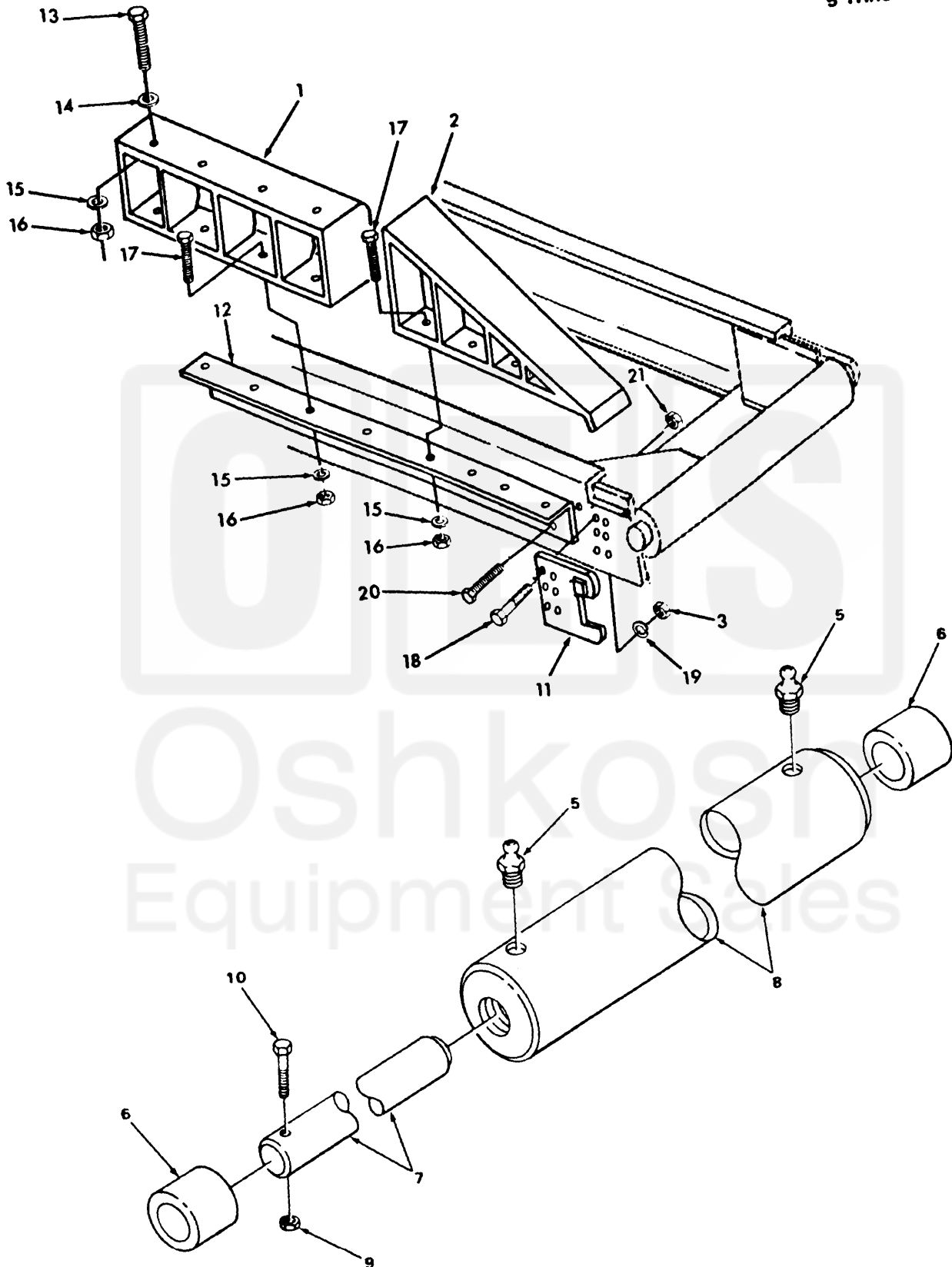


FIGURE 223. TAIL ROLLER ASSEMBLY AND RAMPS.

Current part is item (2) on diagram. Available at www.oshkoshequipment.com

SECTION II (1)	ITEM (2)	SMR (3)	FSCM (4)	PART NUMBER	DESCRIPTION AND USABLE ON CODE (UOC)	QTY (6)
TM9-2320-273-24P						
GROUP:1501 FRAME ASSEMBLY						
FIGURE 223. TAIL ROLLER ASSEMBLY AND RAMP						
1	PAOFF	19207	12370058		SPACER, FIFTH WHEEL	1
2	PAOFF	34623	M/32-20087		RAMP ASSEMBLY, FIFTH RH UOC:U22,U26	1
2	PAOFF	19207	12370051-1		RAMP ASSEMBLY, FIFTH LH UOC:U22,U26	1
2	PBOFF	34623	M/32-20096		RAMP ASSEMBLY, FIFTH RH UOC:U22	1
2	PBOFF	34623	M-D32-20095		RAMP ASSEMBLY, FIFTH LH UOC:U22	1
2	PBOFF	34623	M-D207-20008		RAMP ASSEMBLY, FIFTH LH UOC:U21	1
2	PBOFF	34623	M/207-20009		RAMP ASSEMBLY, FIFTH RH UOC:U21	1
3	PAOZZ	34623	MB219B20000		NUT, PLAIN, EXTENDED UOC:U22,U26	8
4	PBOFF	58864	11004		ROLLER ASSEMBLY, TAI UOC:U22,U26	1
5	PAOZZ	96906	MS15003-1		.FITTING, LUBRICATION UOC:U22,U26	1
6	PAOZZ	34623	81609		.BEARING, SLEEVE (OLD) UOC:U22,U26	2
6	PAOZZ	96906	MS35771-207		.BEARING, SLEEVE UOC:U22,U26	2
7	PBOZZ	19207	12370106		.SHAFT, STRAIGHT UOC:U22,U26	1
8	PBOZZ	19207	123701013		CYLINDER, ROLLER UOC:U22,U26	1
9	PAOZZ	80205	NAS1408A6		NUT, SELF-LOCKING, HE UOC:U22,U26	1
10	PAOZZ	11862	9430725		SCREW, CAP, HEXAGON UOC:U22,U26	1
10	PAOZZ	34623	M-C25-20001		SCREW, CAP, HEXAGON UOC:U22,U26	8
11	PBOZZ	19207	12370055-1		BRACKET LH UOC:U22,U26	1
11	PBOZZ	19207	12370055-2		BRACKET RH UOC:U22,U26	1
12	PBOZZ	34623	MD10-20056		BRACKET, ANGLE LH UOC:U22,U26	1
12	PBOZZ	34623	M/D10-20057		BRACKET, ANGLE RH UOC:U22,U26	1
13	PAOZZ	96906	MS90727-187		BOLT	10
14	PAOZZ	96906	MS27183-23		WASHER	10
15	PAOZZ	96906	MS35338-51		WASHER, LOCK	10
16	PAOZZ	96906	MS51968-24		NUT	10
17	PAOZZ	96906	MS90727-186		BOLT	8
18	PAOZZ	96906	MS90727-191		BOLT	8

Current part is item (2) on diagram. Available at www.oshkoshequipment.com